

# WELLINGTON BOOT WANDER

*A circular route from Great Wilbraham to Fulbourn*



## THE CARPENTERS ARMS TO FULBOURN CIRCULAR WALK

9km (5.5 miles) | 2hr 30 mins

**Wellies recommended!**

From The Carpenters follow the road right, to the bend and through Frog End, away from Great Wilbraham, keeping close to the grass verge until the bend (about 400m). On the right hand side, a sign and white fence outline a footpath leading away from the road. Follow the footpath until you reach a large gate with a smaller kissing gate on the side. You have now reached Great Wilbraham Common. Watch out for the possibility of cattle grazing.

Go straight across the field, keeping to the right hand side. You will pass a small pond on your right. Cross the small gated bridge ahead on the right. Then turn left and almost immediately right to follow the deep trench into the centre of the field. You will see a silo ahead of you.

On reaching the farm track, head West, away from the silo and toward the farm

buildings. Passing the farmhouse, follow the path around the back towards a private area of land. To avoid this, take another left following the hedgerow all the way round a bend and towards the arable fields. When you reach another kissing gate, instead of going through, travel diagonally across the crop field on the right, following a narrow and often muddy trail.

Cross a small bridge at the end of the crops, turning left to continue across a tree lined field, until reaching another gate parallel to Wilbraham Road. Then turn right up the road, keeping to the right-hand grass verge. At the next public footpath sign, cross the road into the field opposite. Take the thin path diagonally across the field towards the huge metal silo. As you approach the silo, a wire-netting fence and yellow footpath sign direct you on a narrow path running down the side of the building. Follow the winding path all the way through to the adjoining road.

Take a left and cross over the level (railway) crossing. Continue down the main road, towards the centre of Fulbourn, (10 mins).

On reaching Fulbourn Church, head around it passing the quant high-street on your right. A Co-op off to the right is a great spot to grab a quick bottle of water to help you on your way. Once refreshed, continue past the Church entrance and down Manor Road.

A small grass common with benches facing the Fulbourn War Memorial Cross provides the perfect halfway stop for tired legs. Continue down Manor walk for a few more steps until you reach Stonebridge Lane on your left. Follow this until the end of the tarmacked roadway. Here the road surface becomes rough and is often muddy in winter. At the very end of the track, take a left at the junction signposted towards Great Wilbraham. Go through two wooden posts, across the side of the field and over a little bridge to join a wire-netted pathway. As you follow the path beside the arable fields, you can see the first glimpses of the wind farm on the horizon.

Cross another bridge and continue, passing the entrance to the Nature Reserve on the left. Follow the path round the corner of

the field and straight up to a final bridge between hedges. Turn left onto the farm track, following it past the remains of an old stockyard at the foot of Fleam Dyke, where the footpath sign to Great Wilbraham indicates a left, then immediate right turn onto a long grassy path across the field. The tower of St Nicholas' Church, Great

Wilbraham can be clearly seen ahead in the distance.

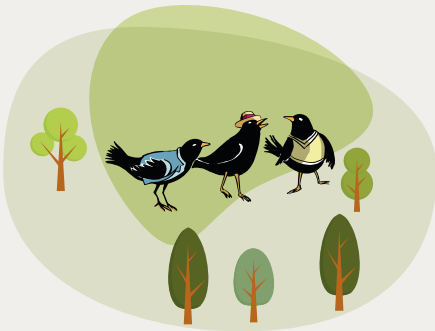
Turn left on the track beyond the hedgerow and continue for several hundred yards, then turn to the right across a field, until you reach a metal stile allowing you to cross the railway tracks. A hole has kindly been cut in wire

netting for furry companions to have easy access! Cross the opposite stile and down the track, back toward Frog End in Great Wilbraham.

Head back to our place to enjoy hearty dishes and tempting treats, fresh from the kitchen!

## AROUND AND ABOUT

### Points of interest in Great Wilbraham



#### GREAT WILBRAHAM COMMON

Great Wilbraham Common supports neutral grassland communities of the calcareous loam grassland type. This is a type that is now rare in Britain. Only fragments are known to persist, chiefly as small areas of common land. This site is one of the largest remaining species-rich grasslands in Cambridgeshire. The Common is home to many different animals, butterflies and other insects. Birds such as green woodpeckers and cuckoos abound. It is truly a wonderful, tranquil and special place.

## OUR INNS



### THE PACKHORSE INN MOULTON

A village green, a thriving local shop, a meandering river and an award winning local – Moulton really is the quintessential rural idyll.

[www.thepackhorseinn.com](http://www.thepackhorseinn.com) 01638 751818

Bridge St, Moulton, Newmarket,  
Suffolk CB8 8SP



### THE THREE BLACKBIRDS WOODDITTON

A 17th Century village pub, situated in the picturesque heart of horse racing country near Newmarket. A cosy, relaxed setting to kick off your boots – enjoying time with friends and family.

[www.threeblackbirds.co.uk](http://www.threeblackbirds.co.uk) 01638 731100

36 Ditton Green, Woodditton,  
Newmarket, CB8 9SQ

## DISCOVER MORE

[www.chestnutgroup.co.uk](http://www.chestnutgroup.co.uk)

